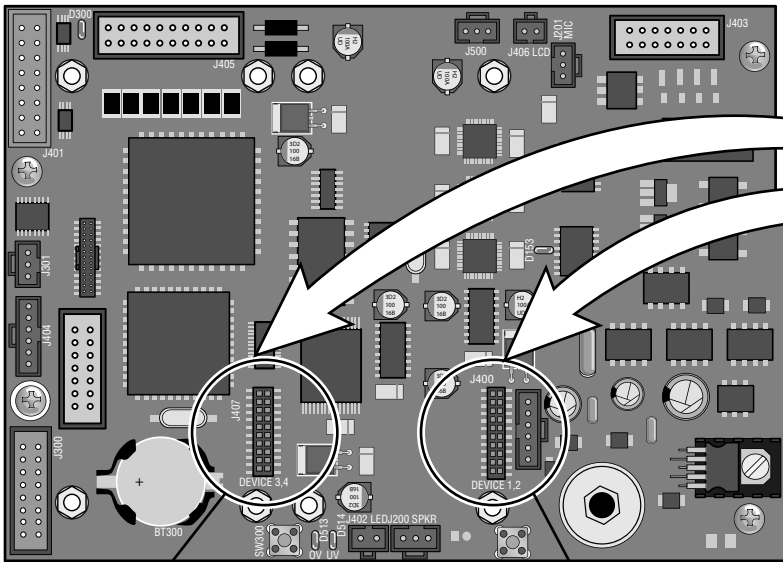


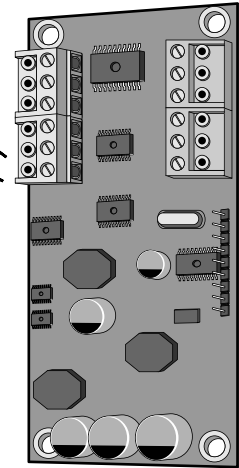
Wiegand Module for EL models • Model WOMODKT

Caution! A static discharge can **DAMAGE** circuit boards.



J407

J400



Wiegand Module

2 modules can be mounted in the EL model.
Supporting up to 4 Wiegand devices.

- ① **Disconnect power to your unit!** Unlock and open the unit.
- ② Place Wiegand module(s) in **J400 Plug - Device 1(J1) and 2(J2)** and/or **J407 Plug - Device 3(J1) and 4(J2)** (4 screws per board).
- ③ All wires **MUST** go through the conduit hole in the back mounting plate of unit. **Wiring callouts are under removable wire connectors.** Connect the shield wire from the device(s) to the backplate or earth ground rod. Some Wiegand devices have a sixth blue wire. **DO NOT** connect this blue wire to the unit. Insulate this wire from the unit to prevent a short (refer to instructions supplied with the Wiegand device for more information). When using an Essex keypad (Chamberlain model # ESSWOKSG), do not connect the brown LED control wire. Connecting this wire will cause the keypad to work intermittently.
- ④ After the installation is complete, each device connected to the Wiegand Module(s) must be tested by swiping a card or entering a digit once, so that the new module is automatically detected. You can then go into programming and assign your devices to the doors.

